

axatc
COMPANIE DE CONSTRUCTII



[AXATC.RO](https://www.axatc.ro)

[Youtube](#)

[Linkedin](#)

[Facebook](#)



SERVICES WE OFFER

- General contractor in constructions
- Rental construction equipment
- Earthmoving works (excavations, embankments) – vertical systematization
- Land improvements – hydraulic projects
- MEP installations

COMMITMENT • TRUST • PERSEVERANCE
TEAMWORK • ACHIEVEMENT

BUSINESS GROWTH OVERVIEW

Revenue: ~€11M (2023) → ~€17.5M (2024)

Employees (Group Level): 97 (2023) → 125 (2024)

Starting from a small team with great plans and ideas, AXATC laid the basis of a company that stands for the future. A group of **over 100** experts stays now at your disposal, being specialized in engineering, construction, design and project management. With **modern machinery and high standard equipment**, AXATC turns your plans into reality, no matter if your project includes **bridges, roads, office buildings, residential constructions or industrial sites.**





PROJECT MANAGEMENT IN CONSTRUCTIONS & VALUE ENGINEERING

AXATC team provides consultancy for

- Constructions
- Construction design
- Value Engineering
- Technical support and project evaluation

GENERAL CONTRACTOR IN CONSTRUCTIONS

- 17 Years of experience on the Romanian construction market
- Modern equipment, specialized personnel
- The team consists of engineers, architects and project managers
- The team consists of engineers, architects and project managers





ROADS AND UTILITY NETWORKS

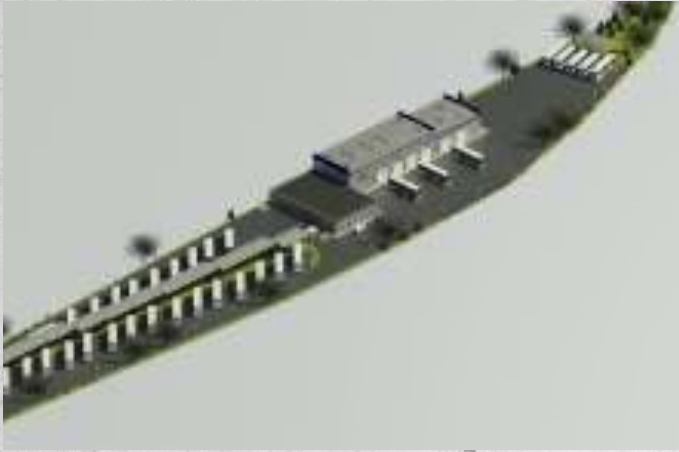
- The construction and logistics represent the main-core of the company AXATC
- Design and execution of civil constructions, roads and networks
- Technical endowment with modern equipment
- Technological basis with modern resources – In Cornetu village (5004 sqm)
- Optimizing the budget for the needs of each client

DESIGN AND EXECUTION OF ELECTRO-MECHANICAL SYSTEM

- Design and execution of electro-mechanical installations
- Maintenance of the realized systems
- Qualified personnel
- The highest quality equipment and mounting parts
- Compliance with all ISO certifications



RECENT PROJECTS



Electric Bus Depot

📍 Chitila City, Ilfov

Bus Depot

14,643 sqm plot – **8,5 MIL Euro**

On-Going



Reconstruction Old Building

📍 George Coșbuc str, Bucharest

Administrative Building

Bs+Gf+3F – 1500 sqm – **5,5 MIL Euro**

On-Going



City Police Headquarters

📍 Chitila City, Ilfov

Police Station

Gf+2F – 1116 sqm – **2,5 MIL Euro**

On-Going

RECENT PROJECTS



BUS GARAGE - DEVA

📍 Deva City, Hunedoara district

Design and build

Gf – 4260 sqm – Also includes an office area and a bus wash
Total value: 2,85 MIL Euro

Finished



PUBLIC RINK - BUCHAREST

📍 Sector 4

Design & build

Gf+1F – 6500 sqm, 800 seats. **12 MIL Euro**

Finished



ISU CALARASI HEADQUARTERS

📍 Calarasi district

CONSOLIDATION, RETROFITTING, EXTENSION

Bs + Gf + 3F+ Attic – 5000 sqm – **4.6 MIL Euro**

Finished

RECENT PROJECTS



RESIDENTIAL BOUTIQUE - URBANO URANUS Reinforcement & Restoration of a Historic Building

📍 Petre Linetes str, Bucharest

Apartment building with 25 units

Bs+Gf+5F – 3130 sqm – **2.3 MIL Euro**

Finished

📍 Calea Victoriei str, Bucharest

Historic Building

Bs+Gf+1F+A – 1200 sqm – **4 MIL Euro**

On-Going

Police Station

📍 Pantelimon, Bucharest

Police Station

Gf+4F – 1600 sqm – **6 MIL Euro**

On-Going

RECENT PROJECTS



KINDERGARTEN - CORNETU



Ilfov district

Extension of the existing building with one more floor

Gf + 1F - 900 sqm. Extension of the facility for another 60 children
820 k euro

Finished

KINDERGARTEN - ARICESTII RAHTIVANI SCHOOL GYM - ARICESTII RAHTIVANI



Prahova district

Design & build

Gf + 1F – 1320 sqm. The new facility will be fully equipped and will accommodate 60 children. **1.1 MIL euro**

Finished



Prahova district

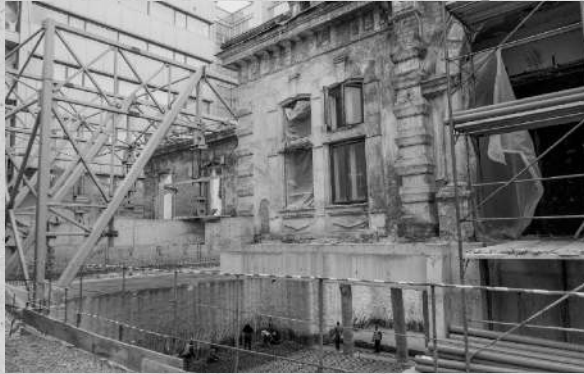
Design and build

Gf+1F – 1830 sqm -150 seats – **1.8 MIL euro**

Finished

PROJECT SANADOR

📍 Victoriei Square, Bucharest



Phase I – Oncology Clinic

2 uG + G + 6fl

Buildings area = 3200 sqm

TOTAL VALUE : 4,3 MIL EUR

Phase III – Bridge

between Oncology Clinic and Sanador General Hospital

TOTAL VALUE : 240 k EUR

Phase II – 3 Floor Extension

PET-CT – 260 sqm

TOTAL VALUE : 930 k EUR

Phase IV – Exterior elevators

structure, façade works & fire compliance

TOTAL VALUE : 930 k EUR

Phase V – New Extension

Extension over 8th floor – 300 sqm

State of the art Operating rooms

ICU & additional spaces

TOTAL VALUE : 1,83 MIL EUR

Finished

PROJECTS 2022-2023



Production Hall Satech



Pitesti district

Built area 510 sqm

Total value: 700 k euro

Finished



FIRE STATION - CORNETU



Ilfov district

2 Fire trucks garage + fire dep. dispatch

Gf+1F – 600 sqm – 630 k euro

Finished



TMShop Tunari



Ilfov district

Built area 1122 sqm

Total value: 900k euro

Finished

PROJECTS 2021-2022



LIDL STORE - GIULESTI

📍 Intrarea Godeni str, Bucharest

2200 sqm of store + 5000 sqm of access roads

PARKING LOTS AND GREEN SPACES

Finished



LA STRADA - MILITARI II

📍 Chiajna city, Ilfov district

2000 sqm of three stores + 3200 sqm of access

ROADS, PARKING LOTS AND GREEN SPACES

Finished



MEDICAL ORTOVIT

📍 Miron Costin str, Bucharest

Building area = 1590 sqm

UG + GF + 3F + E4R

Finished

PROJECTS 2020 – 2021



URBANOO 27 RESIDENTIAL

📍 Otopeni City, Ilfov district

built area of 450 sqm / block

TWO GF + 2F

Finished



HAGAG OFFICE

📍 Tudor Arghezi str, Bucharest

Consolidation project

S-2 / GF + 6F

Finished



WAREHOUSES - AETOS TRADING

📍 Bolentin City, Giurgiu district

S = 1200 sqm

Finished

PROJECTS 2020 – 2021



RETAIL AND OFFICES + LOGISTIC HALL FOR TRADY 2000

📍 Bragadiru city, Ilfov district

1800sqm + logistic hall 1700 sqm

GF + 2F

Finished

TECHNICAL HALL – PEPSICO

📍 Popesti city, Ilfov district

A production space area of 780 sqm

Finished

OFFICES FOR TRADY 2000

📍 Calea Calarasi, Bucharest

Building area = 1000 sqm

G-1 / GF + 2F

Finished

PROJECTS 2019 – 2020



ARCHIVE STORAGE & OFFICES FOR BUCHAREST CHAMBER OF PUBLIC NOTARY

📍 Cernica city, Ilfov district, Drumul intre Tarlale str

1 G fl , S built area : 3000 sqm

TOTAL VALUE: 3,5 MIL EUR

Finished



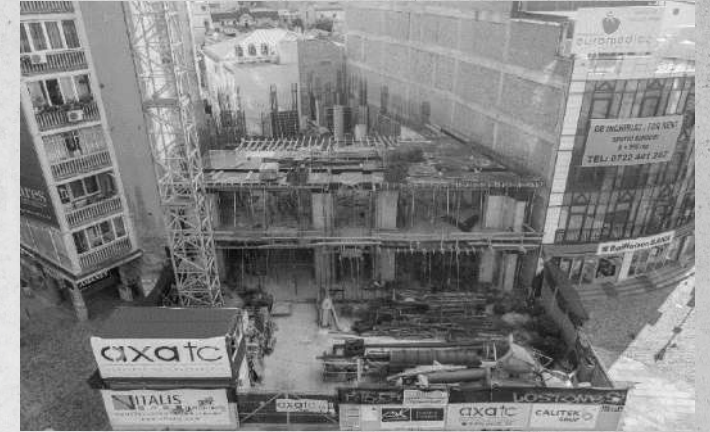
HOTEL BLEND CITY CENTER 3*

📍 Gh pop de Basesti str, Bucharest

S = 400 sqm, 1uG + G+ 4fl / Buildings area = 1250 sqm

TOTAL VALUE: 800 K EUR

Finished



MAGAZINUL BUCURESTI

📍 bd I.C. Bratianu str, Bucharest

S = 400 sqm, 1uG + G+ 4fl / Buildings area = 3300 sqm

TOTAL VALUE: 5,5 MIL EUR

Finished

PROJECTS 2018 – 2019



SANADOR - ONCHOLOGY CLINIC

📍 Sevastopol str, Bucharest

S = 450 sqm, 2 uG + G + 6fl / Buildings area = 3200 sqm

TOTAL VALUE : 4,3 MIL EUR

Finished



LA STRADA BRAGADIRU

📍 Cristalului str, Bragadiru

S = 400 sqm, 1uG + G+ 4fl / Buildings area = 1250 sqm

TOTAL VALUE : 1 MIL EUR

Finished



CONSTRUCTION / MEP WORKS GLOBALWORTH TOWER

📍 Floreasca str, Bucharest

2nd floor parking , above existing one

S BUILT AREA: 2200 SQM

Finished

PROJECTS 2018 – 2019



LA STRADA MILITARI

📍 Rezervelor str, Chiajna City

S = 5000 sqm / Buildings area = 2050 sqm

TOTAL VALUE : 1,2 MIL EUR

Finished



Road construction & edilitary works specialised contractor under Petcu Construct AG

LIDL SHOPPING CENTERS

📍 Berceni – Drumul Binelui str / Balotesti City – DN1
Oltenita County / 1 Decembrie Village – DN5

S = 400 sqm, 1uG + G+ 4fl / Buildings area = 1250 sqm 42 luxury apartments / 1 UG+G+9fl / Sbuilt area = 6800 sqm

Finished



BARIO RESIDENCE

📍 Bucharest distr 1

TOTAL VALUE : 3,2 MIL EUR

Finished

PROJECTS



DECHATLON AND MEGA IMAGE BANEASA

📍 zone Baneasa, Bucharest

S land = 12.000 sqm / 1Gfl + 1 fl, S built area = 12.000

TOTAL VALUE: 6,5 MIL EUR

Finished



REFURBISH & FIT OUT / MEP INSTALLATIONS POSEIDON RESIDENCE

📍 Fabrica de gheata str, Bucharest

1UG, G + 17 fl / 156 apartments / S built area = 24.000

TOTAL VALUE: 4,5 MIL EUR

Finished



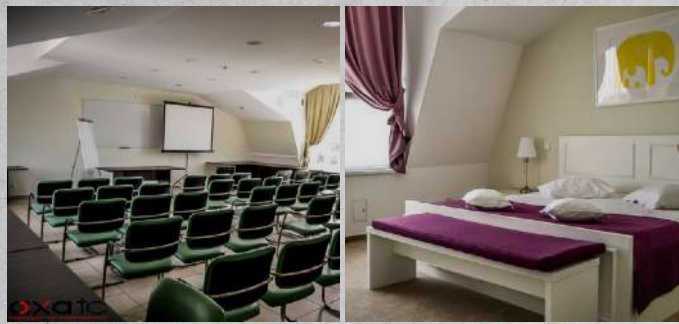
LA STRADA BRASOV

📍 Brasov City

S = 5000 sqm / Building area = 2050 sqm

TOTAL VALUE: 1,3 MIL EUR

Finished



PROJECTS



PROJECTS

FOR MORE INFORMATION, PLEASE VISIT OUR WEBSITE

THANK YOU!

The logo for axatc features the letters 'axatc' in a bold, lowercase, sans-serif font. The 'a' is black with a red circular element on its left side. The 'x' is black with a red diagonal slash through it. The 't' is black with a red vertical bar on its left side. The 'c' is black. A red horizontal line is positioned below the letters.

COMPANIE DE CONSTRUCTII

Office 6 Building,
Drumul Sariei str 17 nb, 3 fl, Bucharest
+4 0720 292 292
Fax: +4 021 448 12 85
office@axatc.ro
www.axatc.ro